

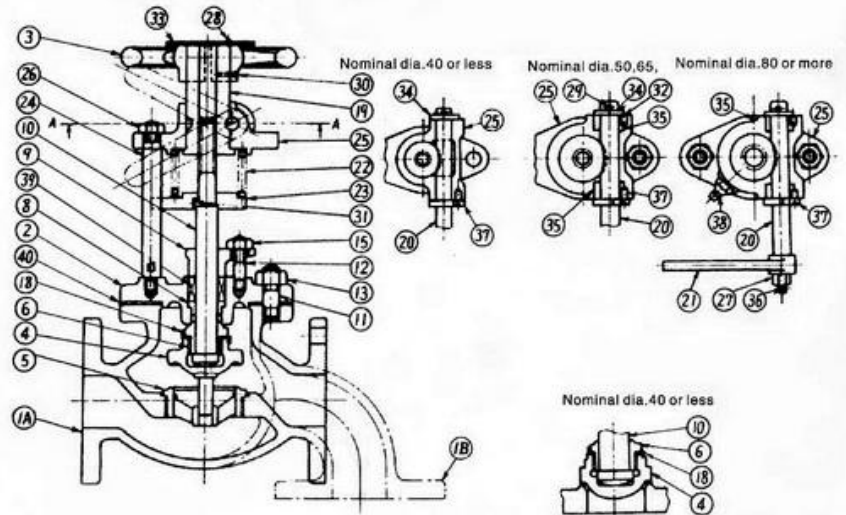


MARINE VALVE



Marine Bronze 5 Kg/cm² Fuel Oil Tank Emergency Shut Off Valves

JIS F 7399



No.	Component	Material.			No.	Component	Material.			
		Nominal dia. 40 or less	Nominal dia. 50 and 65	Nominal dia. 80 or more			Nominal dia. 40 or less	Nominal dia. 50 and 65	Nominal dia. 80 or more	
1A	Body (A-Type)	Bonnet	Cast Steel		22	Spring	Spring Steel			
1B	Body (B-Type)				23	Spring support	Bronze	Steel		
2	Bonnet				24	Stay				
3	Handwheel	Cast iron			25	Support bush for stem	Bronze	Steel		
4	Disc	Bronze or Brass	Stainless		26	Hexagon nut	Steel			
5	Valve seat	-								
6	Disc nut	Brass	Stainless		27	Hexagon nut	Steel			
8	Bonnet bush	-	Bronze or Brass		28	Machine screw				Steel
9	Packing gland	Bronze			29	Split pin	Brass			
10	Stem	Brass	Stainless		30	Machine screw	Steel			
11	Stud bolt	Steel			31	Lock pin	Steel			
12	Stud bolt				32	Set screw	-	Steel		
13	Hexagon nut				33	Name plate	Brass or Al			
15	Hexagon nut	Brass	Stainless		34	Washer	Steel			
18	Disc lock washer	Brass			35	Bush	-	Brass		
19	Bush for stem lift	Brass			36	Split pin	Steel			
20	Operating spindle	Steel	Stainless		37	Set screw	Steel			
21	Lever	Steel			38	Grease nipple	-			
					39	Packing	Asbestos			
					40	Gasket				

■ DIMENSIONS

Unit: mm

Size	FACE TO FACE	FLANGE			HEIGHT	HANDLE DIA	WEIGHT (kg)	
		DIA	PCD	BOLT HOLE			A1	B1
25	130	125	90	4-19	265	125	8.5	8.8
40	170	140	105	4-19	310	140	12.7	13.0
50	220	155	120	4-19	335	160	20.9	21.8
65	270	175	140	4-19	395	180	30.5	32.1
80	300	185	150	8-19	420	180	35.4	37.5
100	350	210	175	8-19	510	224	55.6	59.2

■ TEST PRESSURE (KGF/CM²)

RATING	
	12
SHEEL HYD' TEST	7
SHEEL HYD' TEST	2